

FOR LEASE

WHITNEY
Commercial Real Estate Services

15 HOWARD PL, KITCHENER



1,538 SF OFFICE FOR LEASE

1,538 SF of professional office space located at the street front of 15 Howard Place, Kitchener.

Finished office space with open space, private offices, boardroom, washroom and kitchenette built out. Separated access with lots of natural light throughout the space.

Ample parking available on-site.

AVAILABLE AREA | 1,538 SF

ZONING | B-2 30R

LEASE RATE | \$2,500 / Month Gross



Private
Offices



Natural
Light



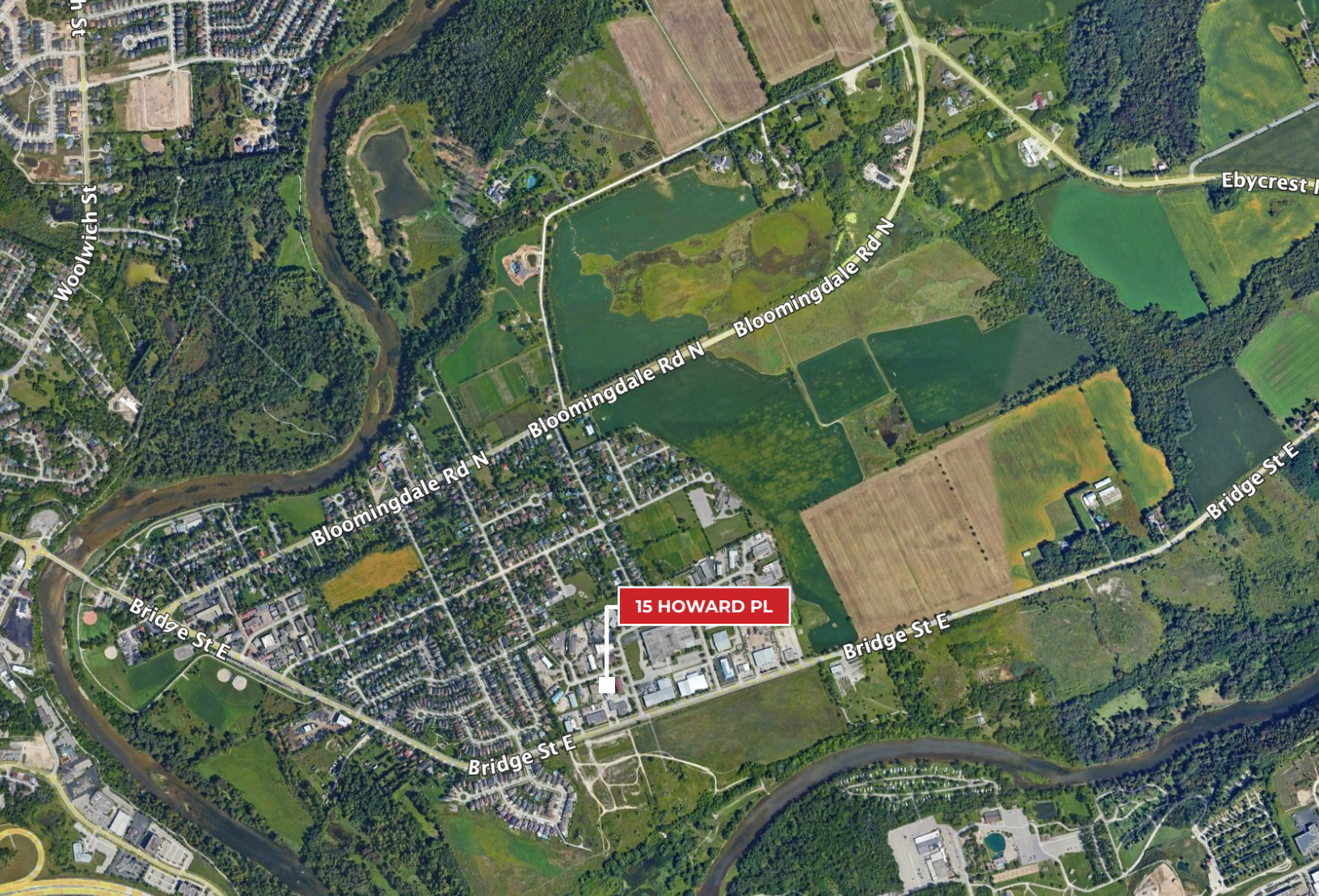
On-site
Parking



Highway
Access



Transit
Nearby



15 HOWARD PL

HWY 85.....	3.5KM	GUELPH.....	22.6KM
UPTOWN WATERLOO.....	6.4KM	CAMBRIDGE.....	23.1KM
CONESTOGA MALL	6.9KM	LISTOWEL.....	54.4KM
DOWNTOWN KITCHENER	7.6KM	HAMILTON.....	70.8KM

Contact us for more information



Rich Evanoff*, SIOR
 Associate Vice President
 226.752.7197
 rich.evanoff@whitneyre.com



Xavier Ayora
 Sales Representative
 226.929.4667
 xavier.ayora@whitneyre.com



WHITNEY & Company Realty Limited, Brokerage
 103 Bauer Place, Suite 2, Waterloo, ON N2L 6B5

519.746.6300 | www.whitneyre.com

The information provided herein, including but not limited to images, assumptions, estimates, and descriptions (the "Information"), is obtained from sources considered reliable. However, WHITNEY & Company Realty Limited ("Whitney") and its representatives, agents, or brokers do not warrant, guarantee, or make any representations as to the accuracy, correctness, or completeness of the Information. Whitney disclaims any liability or responsibility for the information or for any reliance the recipient places upon it. Recipients are advised to perform their own due diligence to verify the Information before relying on it. The Information is subject to change, and any property referenced herein may be withdrawn from the market at any time without prior notice. Property outlines are approximate and may not represent actual boundaries. All Rights Reserved. © Whitney & Company Realty Limited, Brokerage - 2026 MLS
 **Broker *Sales Representative