

FOR SALE

WHITNEY
Commercial Real Estate Services

285 ELM ST E, DURHAM



FREESTANDING INDUSTRIAL BUILDING

6,600 SF freestanding industrial building on 1.046 acres of land for sale.

The building features nicely finished office space at the front of the building, 18' clear height, 1 drive-in door (14' x 12'), 600 volts and 200 amps, LED lighting and excess land for outdoor storage or future building expansion.

BUILDING AREA | 6,600 SF

LAND AREA | 1.046 Acres

ZONING | M2

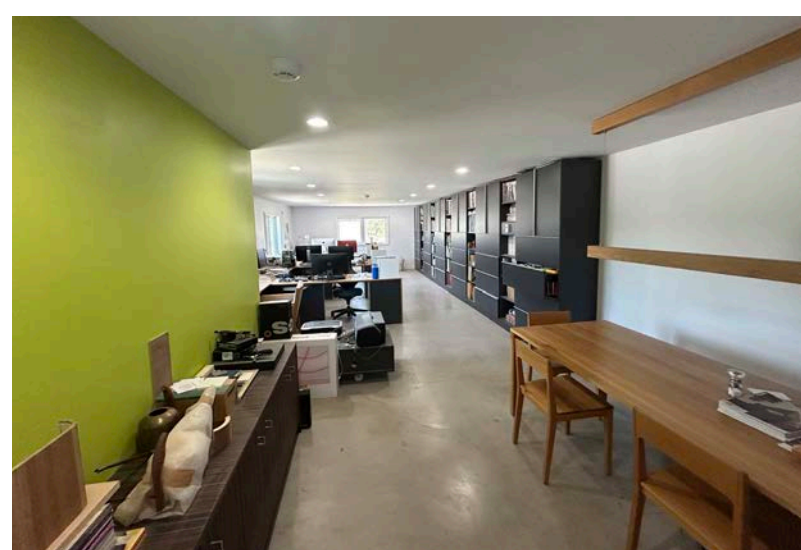
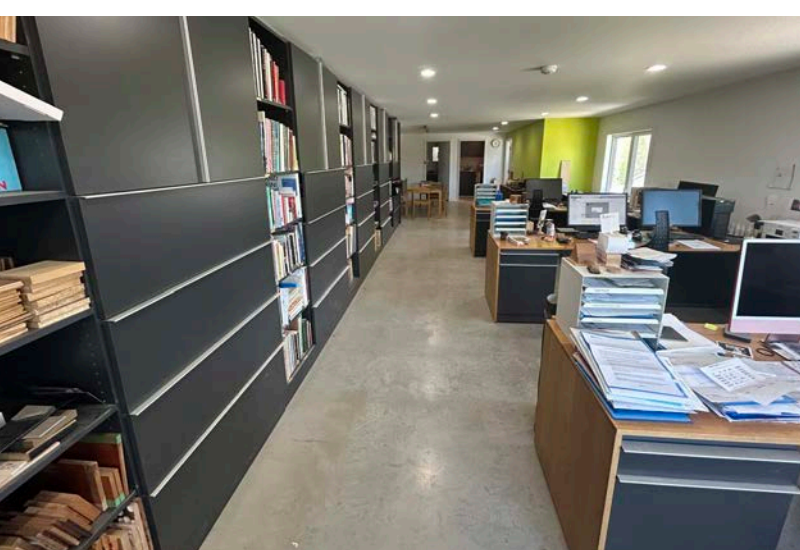
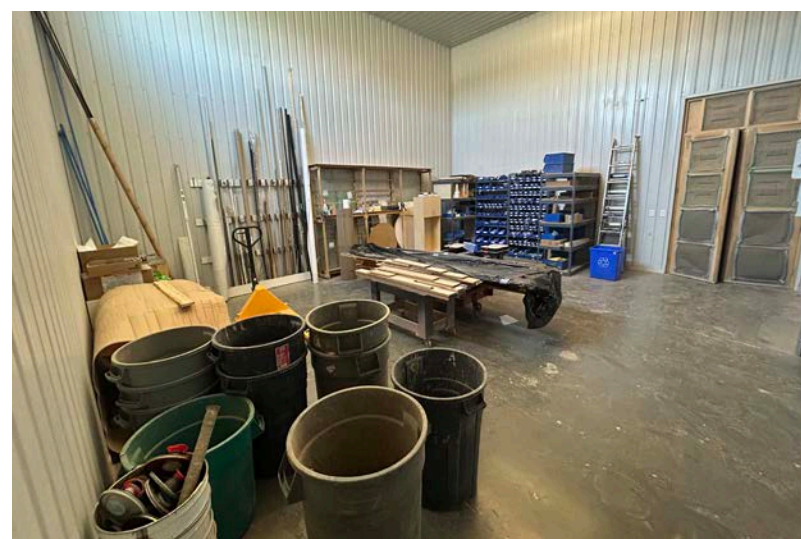
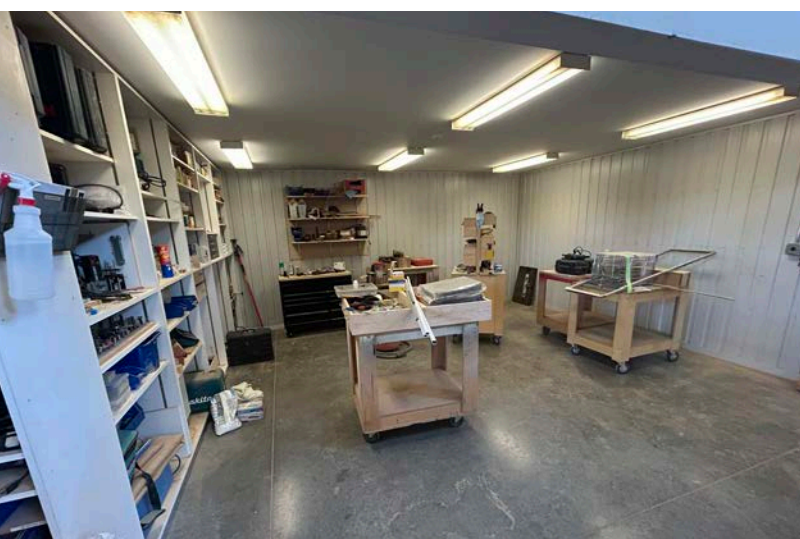
DRIVE-IN DOORS | 1 (14' x 12')

CLEAR HEIGHT | 18'

ASKING PRICE | \$1,250,000

TAXES | \$10,171.74 (2026)





PERMITTED USES
(Complete list available upon request)

- Bakeries
- Building Supply Outlet
- Bulk Sales Establishment
- Custom Workshop
- Heavy Equipment Sales and Rental
- Industrial Mall
- Research and Laboratory Facilities
- Self Serve Storage Building
- Service or Repair Shop
- Printing Establishment
- Warehouse
- Wholesale Outlet

Highway Access

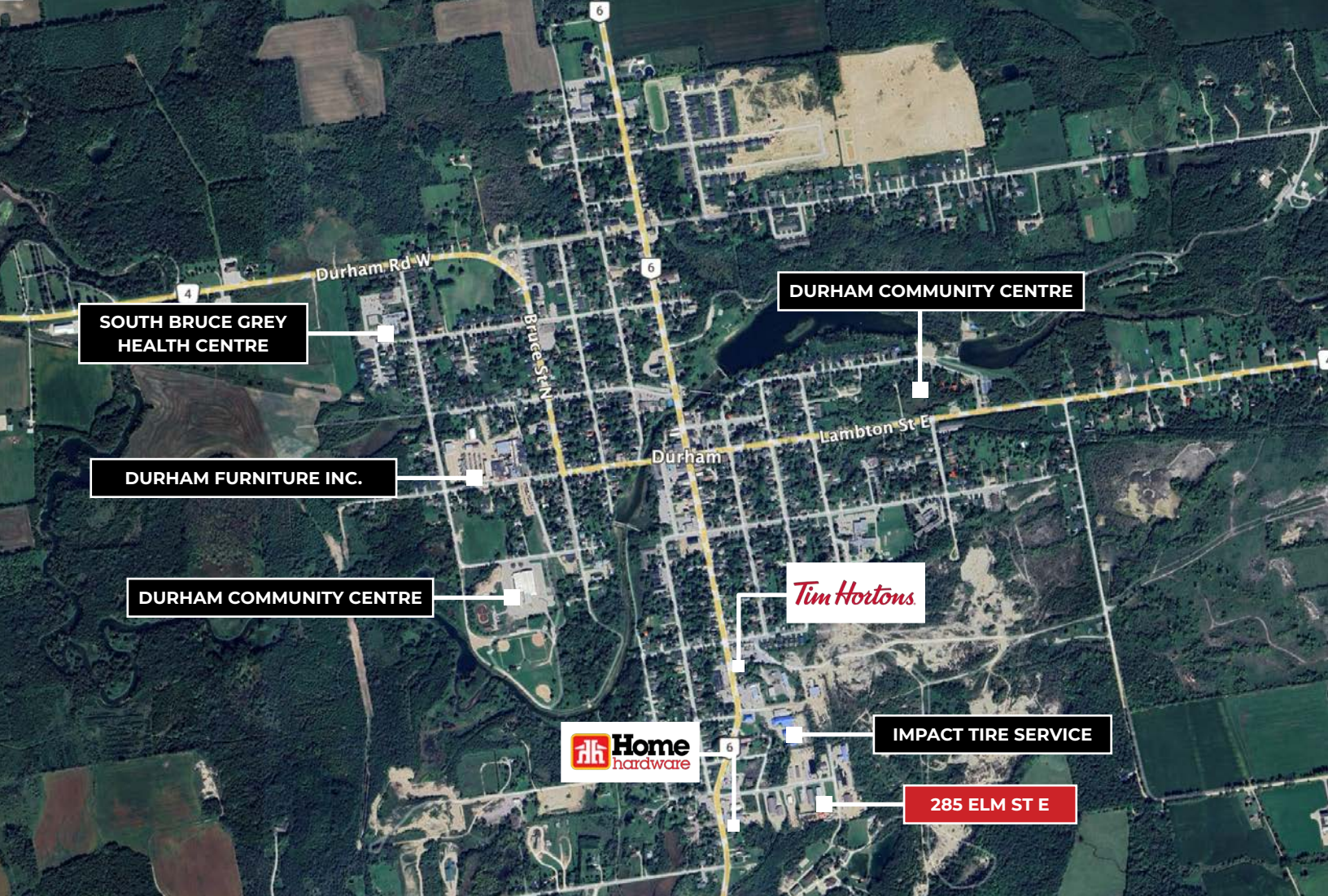
1 Drive-in Door

600V / 200A

Office Area

18' Clear Height

Natural Light



OWEN SOUND 47KM
 KINCARDINE 80KM
 COLLINGWOOD..... 75KM
 KITCHENER..... 102KM

BARRIE 109KM
 HAMILTON..... 141KM
 LONDON 158KM
 TORONTO 168KM

Contact us for more information



Rich Evanoff*, SIOR
 Associate Vice President
 226.752.7197
 rich.evanoff@whitneyre.com



Xavier Ayora
 Sales Representative
 226.929.4667
 xavier.ayora@whitneyre.com

WHITNEY
 Commercial Real Estate Services

WHITNEY & Company Realty Limited, Brokerage
 103 Bauer Place, Suite 2, Waterloo, ON N2L 6B5

519.746.6300 | www.whitneyre.com

The information provided herein, including but not limited to images, assumptions, estimates, and descriptions (the "Information"), is obtained from sources considered reliable. However, WHITNEY & Company Realty Limited ("Whitney") and its representatives, agents, or brokers do not warrant, guarantee, or make any representations as to the accuracy, correctness, or completeness of the Information. Whitney disclaims any liability or responsibility for the information or for any reliance the recipient places upon it. Recipients are advised to perform their own due diligence to verify the Information before relying on it. The information is subject to change, and any property referenced herein may be withdrawn from the market at any time without prior notice. Property outlines are approximate and may not represent actual boundaries. All Rights Reserved. © Whitney & Company Realty Limited, Brokerage - 2026 MLS
 **Broker *Sales Representative