

FOR LEASE

WHITNEY
Commercial Real Estate Services

565 MASSEY RD, GUELPH



3,000 SF INDUSTRIAL UNIT

3,000 SF Industrial unit available for lease located between Woodlawn Road West and Speedvale Avenue West.

The unit features private offices, great clear height, 200 amps / 600 volts as well as one 12' x 14' drive-in door. Situated on a corner lot providing quick access to various highways and nearby amenities. B4 Zoning permits various Industrial uses.

Abundance of parking in both the front and back of the unit.

BUILDING AREA | 3,000 SF

ZONING | B4

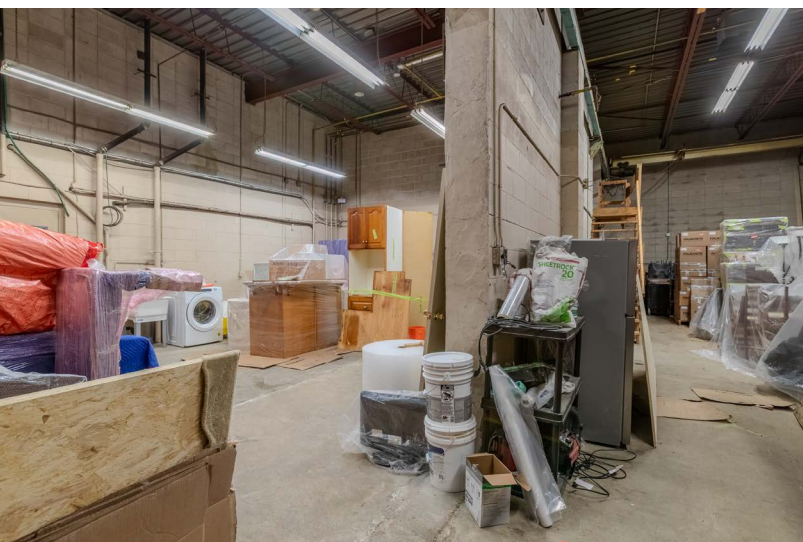
DRIVE-IN DOORS | 1 (12' x 14')

CLEAR HEIGHT | 16'

POWER | 200 Amps / 600 Volts

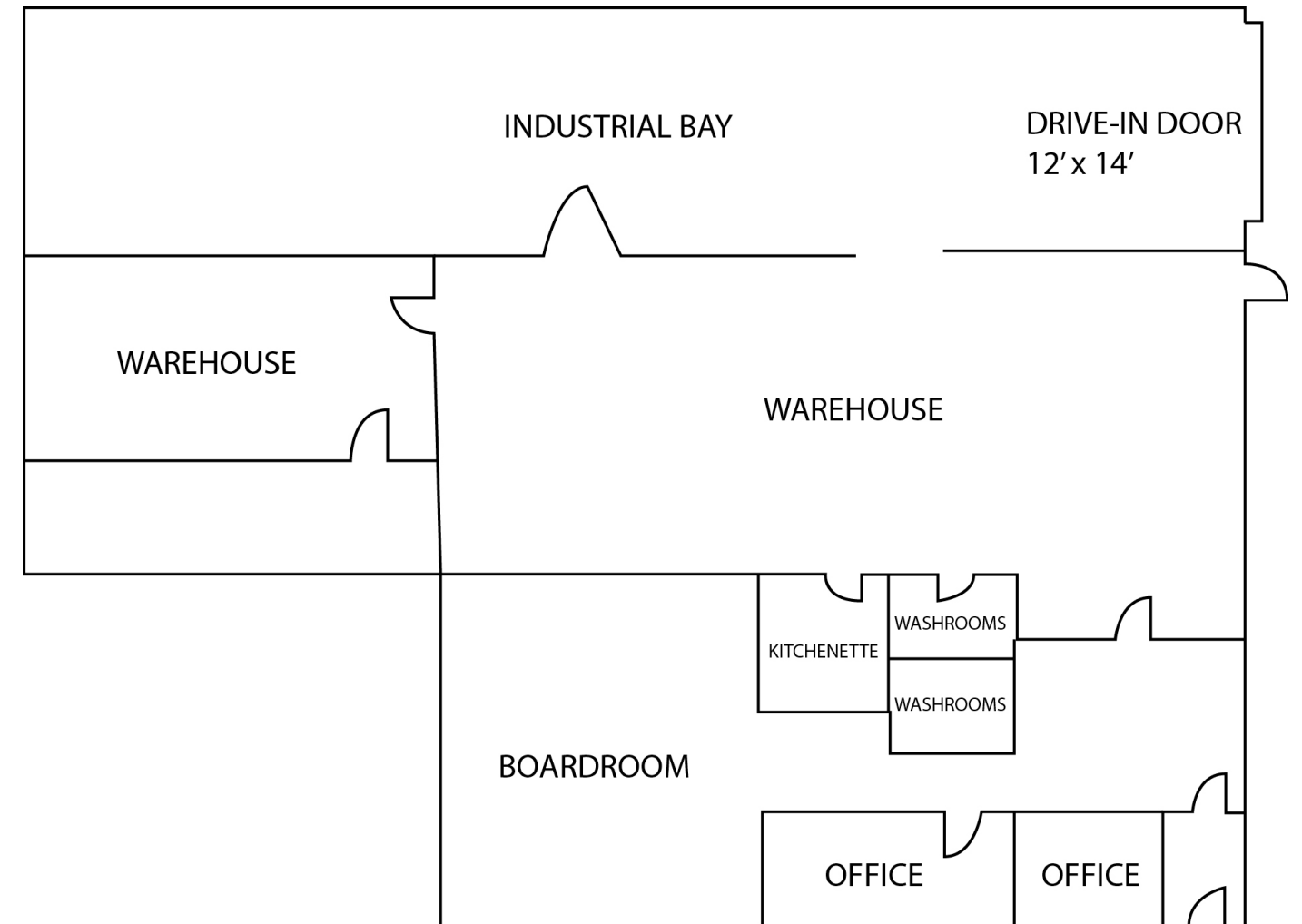
LEASE RATE | \$13.75 / SF Net

ADDITIONAL RENT | \$7.39 / SF



FLOOR PLAN

3,000 SF



Close Proximity
to HWY 6



1 (12' x 14')
Drive-in Door



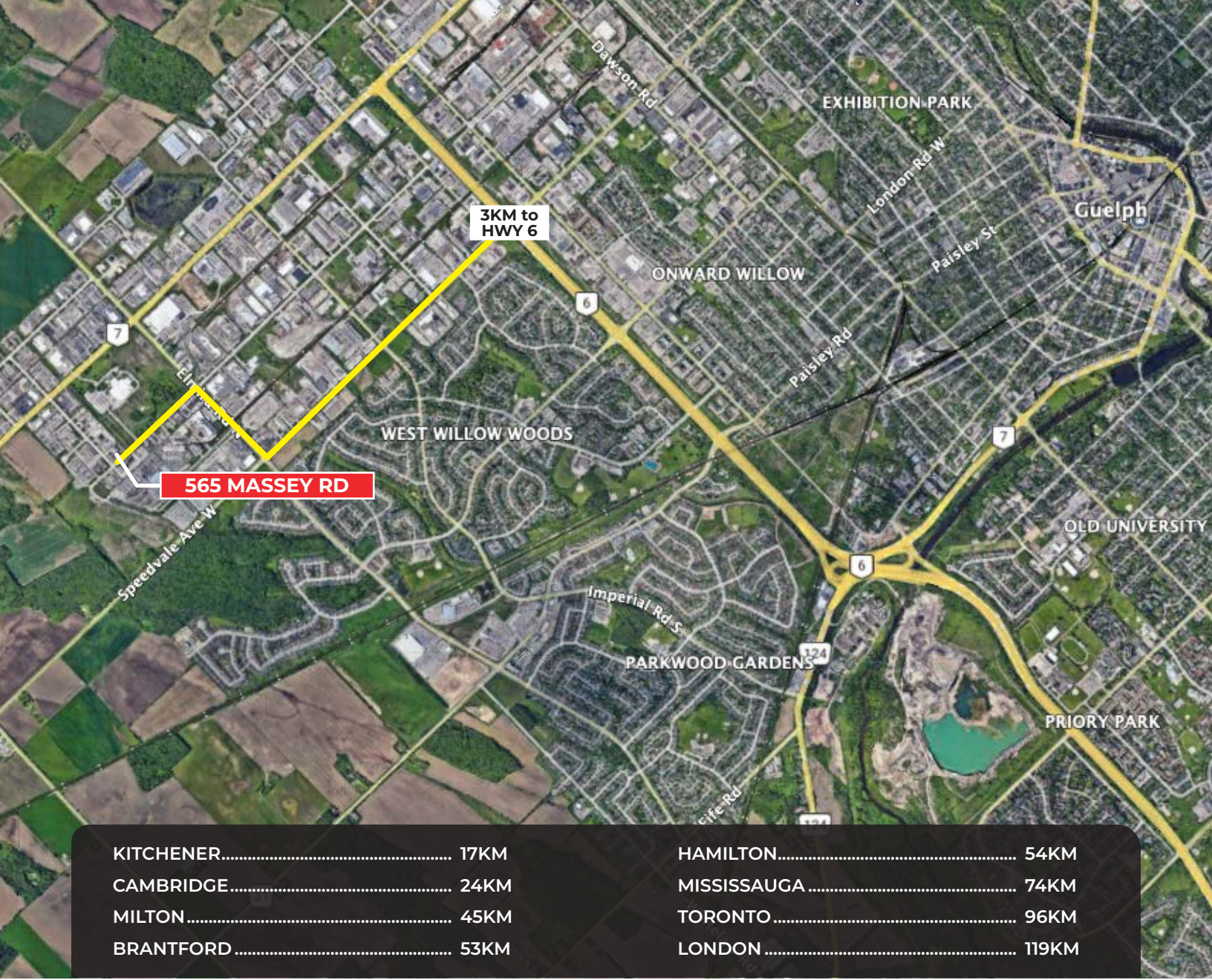
16'
Clear Height



Transit
Nearby

PERMITTED USES (Complete list available upon request)

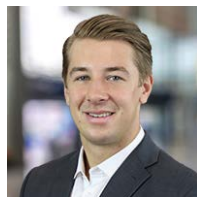
- Catering Service
- Cleaning Establishment
- Contractor's Yard
- Food Vehicle
- Manufacturing
- Repair Service
- Towing Establishment
- Tradesperson's Shop
- Trucking Operation
- Veterinary Service
- Warehouse



KITCHENER..... 17KM
CAMBRIDGE..... 24KM
MILTON..... 45KM
BRANTFORD..... 53KM

HAMILTON..... 54KM
MISSISSAUGA..... 74KM
TORONTO..... 96KM
LONDON..... 119KM

Contact us for more information



Matthew Hayward
Senior Sales Representative
519.270.4691
matthew.hayward@whitneyre.com



Xavier Ayora
Sales Representative
226.929.4667
xavier.ayora@whitneyre.com

WHITNEY
Commercial Real Estate Services

WHITNEY & Company Realty Limited, Brokerage
103 Bauer Place, Suite 2, Waterloo, ON N2L 6B5

519.746.6300 | www.whitneyre.com

The information provided herein, including but not limited to images, assumptions, estimates, and descriptions (the "Information"), is obtained from sources considered reliable. However, WHITNEY & Company Realty Limited ("Whitney") and its representatives, agents, or brokers do not warrant, guarantee, or make any representations as to the accuracy, correctness, or completeness of the Information. Whitney disclaims any liability or responsibility for the Information or for any reliance the recipient places upon it. Recipients are advised to perform their own due diligence to verify the Information before relying on it. The Information is subject to change, and any property referenced herein may be withdrawn from the market at any time without prior notice. Property outlines are approximate and may not represent actual boundaries. All Rights Reserved. © Whitney & Company Realty Limited, Brokerage - 2026 MLS

**Broker *Sales Representative