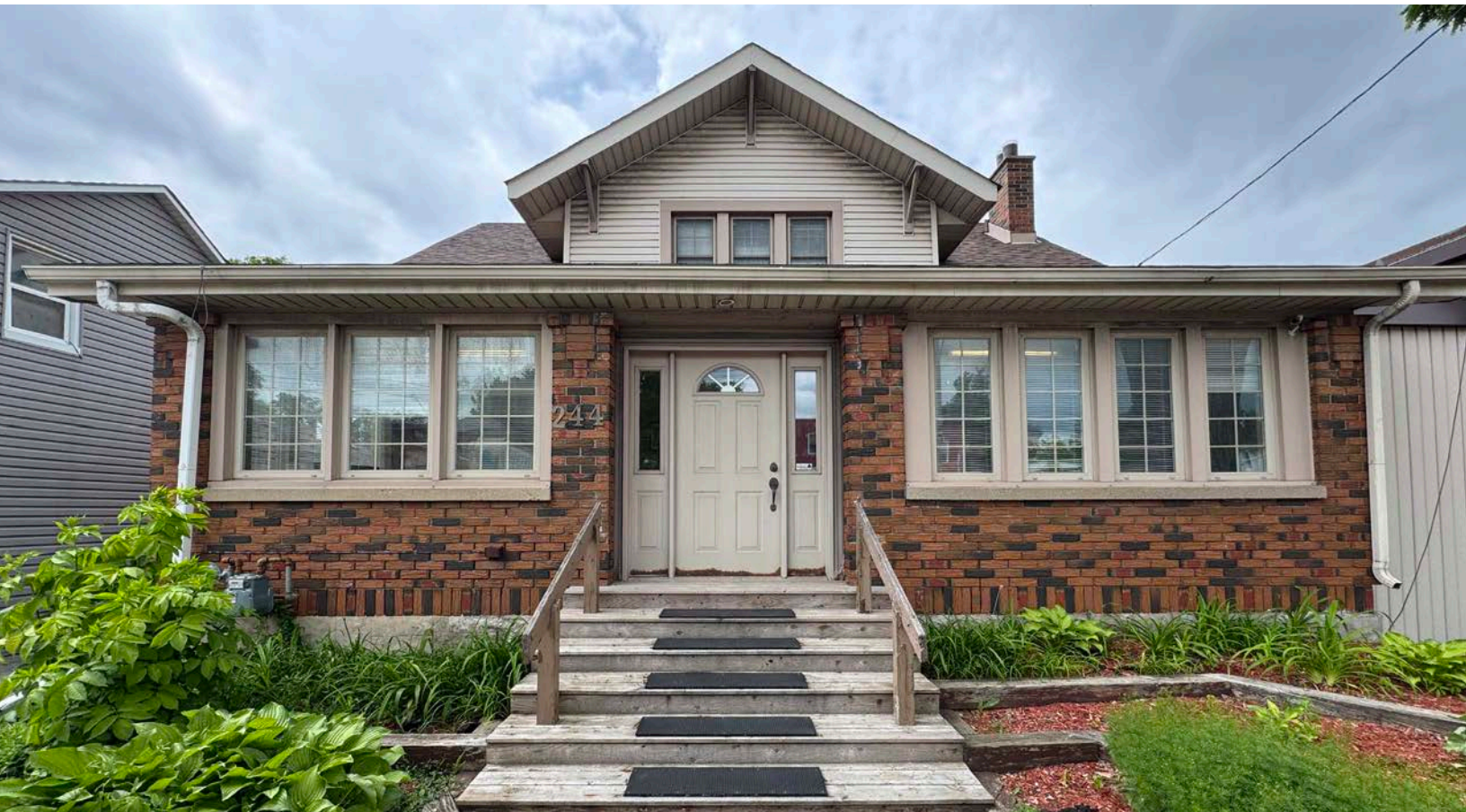


FOR LEASE

WHITNEY
Commercial Real Estate Services

244 WATER ST N, CAMBRIDGE



2,400 SF OFFICE SPACE IN THE HEART OF GALT

Discover a rare opportunity to lease a beautifully maintained 2-storey office building located in the picturesque and historic Galt area of Cambridge. This 2,400 square foot property offers a warm, professional environment, perfect for a wide range of office uses.

Previously home to a human resources and recruitment firm, the layout features a blend of functionality and comfort, including multiple private offices, a spacious boardroom, meeting rooms, and a full kitchen. The interior is clean, well cared for, and move-in ready — with the option to lease the space fully furnished for added convenience.

Enjoy working in a character-filled setting with lovely natural light and charming details throughout. The property is managed by responsive and considerate landlords who take pride in offering a high-quality tenant experience.

BUILDING AREA | 2,400 SF

MAIN LEVEL | 1,400 SF

SECOND LEVEL | 1,000 SF

ZONING | C2

LEASE RATE | \$16.00 / SF Net

ADDITIONAL RENT | \$8.70 / SF



Option to
Come Fully
Furnished



Multiple
Private Offices



On-site
Parking



Amenities
Nearby



Transit
Nearby

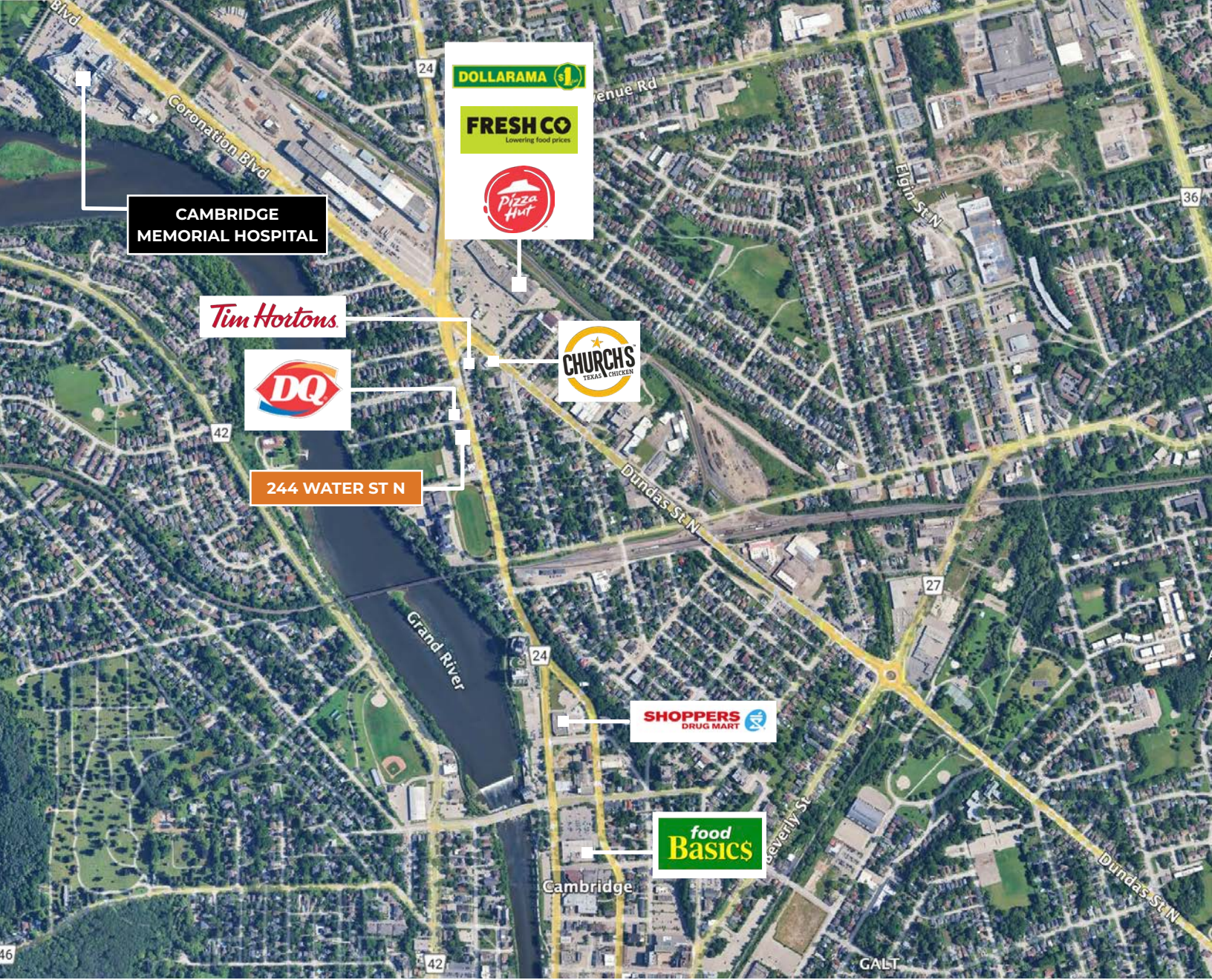


Temperature
Controlled

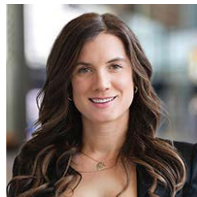
PERMITTED USES

(Complete list available upon request)

- Office, Dispensary or Clinic of a Doctor, Dentists, Chiropractors, Osteopath, Chiroprapist, Optometrist etc.
- Veterinary Office
- Bank or Trust Company Office
- Taxi Dispatching Office
- Telegraph Agency
- Food Services Establishment
- Caterer's Establishment
- Hairdressing Establishment
- Funeral Home
- Shoe Repair Shop
- Commercial School or Private School or Studio



Contact us for more information



Ginger Whitney, SIOR, CCIM
Broker, Partner
519.590.5242
ginger.whitney@whitneyre.com



Jack Hayward
Sales Representative
519.270.3314
jack.hayward@whitneyre.com

WHITNEY
Commercial Real Estate Services

WHITNEY & Company Realty Limited, Brokerage
103 Bauer Place, Suite 2, Waterloo, ON N2L 6B5

519.746.6300 | www.whitneyre.com

The information provided herein, including but not limited to images, assumptions, estimates, and descriptions (the "Information"), is obtained from sources considered reliable. However, WHITNEY & Company Realty Limited ("Whitney") and its representatives, agents, or brokers do not warrant, guarantee, or make any representations as to the accuracy, correctness, or completeness of the Information. Whitney disclaims any liability or responsibility for the information or for any reliance the recipient places upon it. Recipients are advised to perform their own due diligence to verify the information before relying on it. The Information is subject to change, and any property referenced herein may be withdrawn from the market at any time without prior notice. Property outlines are approximate and may not represent actual boundaries. All Rights Reserved. © Whitney & Company Realty Limited, Brokerage - 2026 MLS

**Broker *Sales Representative