

FOR LEASE



7,231 SF Industrial Unit for Lease

13

CENTENNIAL RD - UNIT B
KITCHENER, ONTARIO

WHITNEY
Commercial Real Estate Services

7,231 SF Industrial Unit for Lease

7,231 SF industrial unit with approximately 0.40 acres of outdoor storage space available immediately.

The unit features a great mix of office and industrial space, 18' clear height, 3 drive-in doors, and ample parking. EMP-2 zoning permits a wide range of uses including: warehousing, manufacturing, a contractor's yard and more.

- AVAILABLE SPACE | 7,231 SF
- OUTDOOR STORAGE | ~0.4 Acres
- ZONING | EMP-2
- DRIVE-IN DOORS | 3
- CLEAR HEIGHT | 18'
- LEASE RATE | \$19.50 / SF Gross



PERMITTED USES

- Biotechnological Establishment
- Building Material & Decorating Supply Establishment
- Bulk Fuel & Oil Storage Establishment
- Commercial Vehicle Wash Facility
- Craftsperson Shop
- Daycare Facility
- Drive-Through Facility

- Fitness Centre
- Heavy Repair Operation
- Printing or Publishing Establishment
- Manufacturing
- Towing Compound
- Warehouse



EMP-2
Zoning



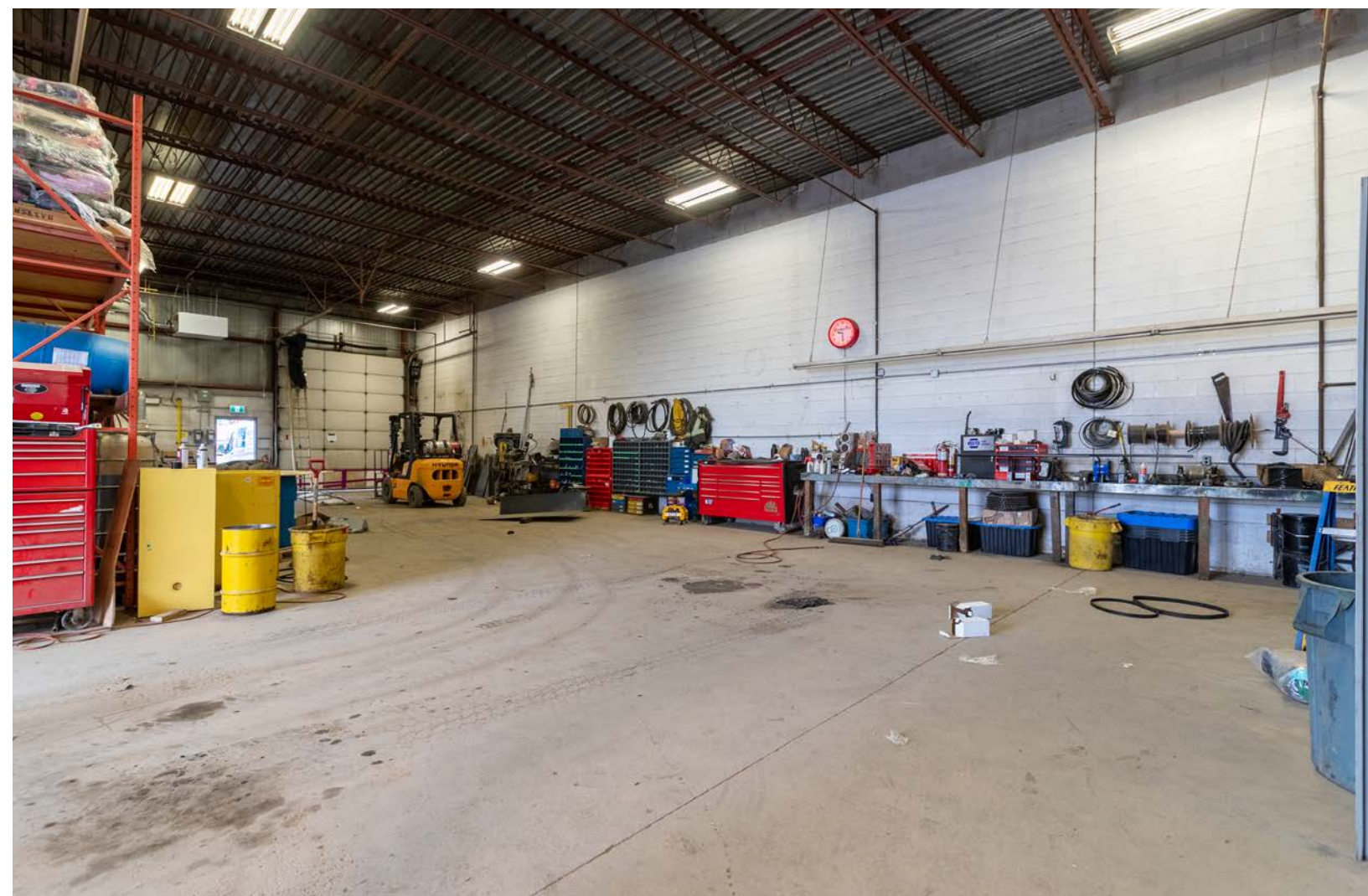
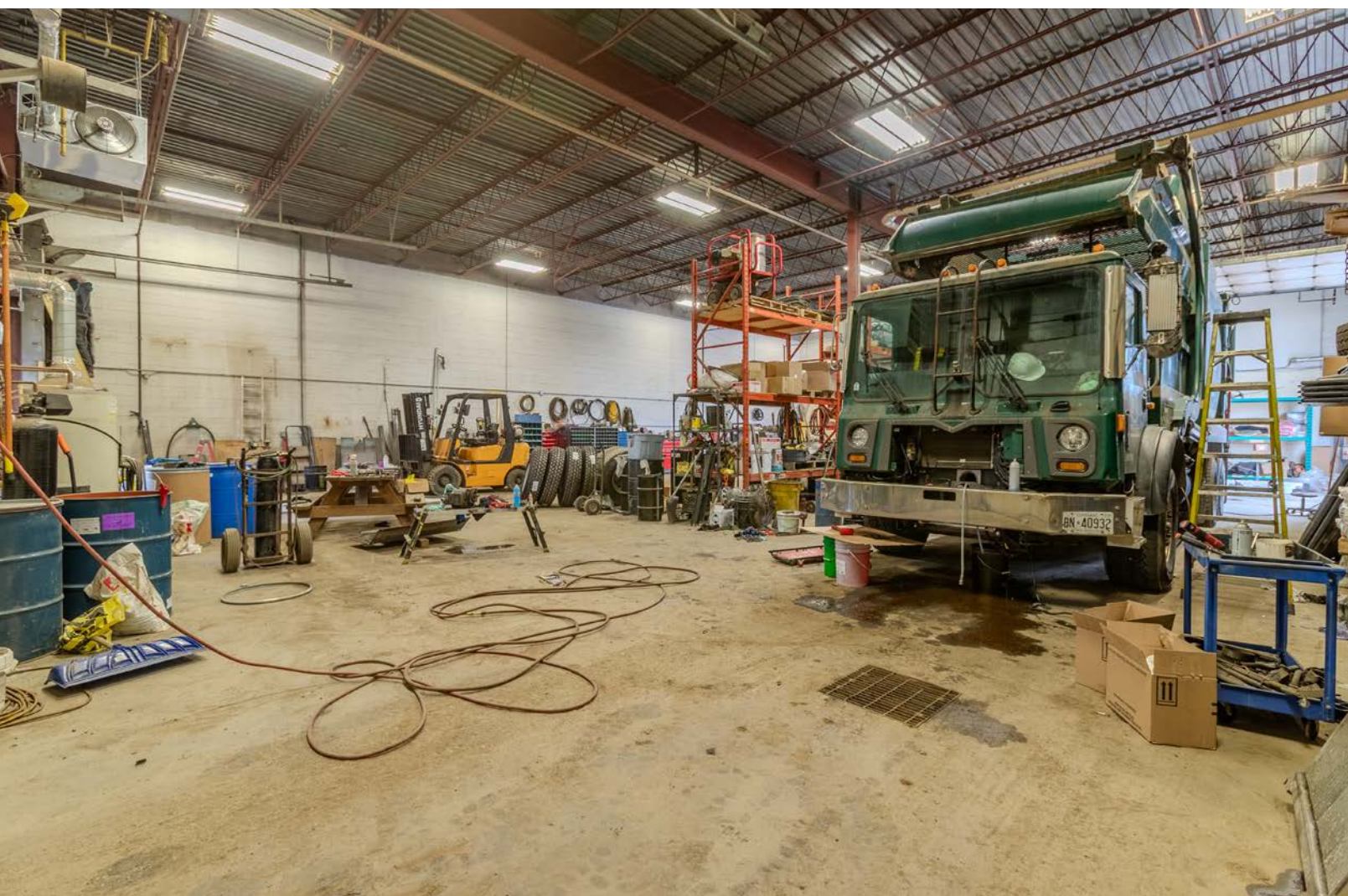
18'
Clear Height



Close Proximity
To Highway 7



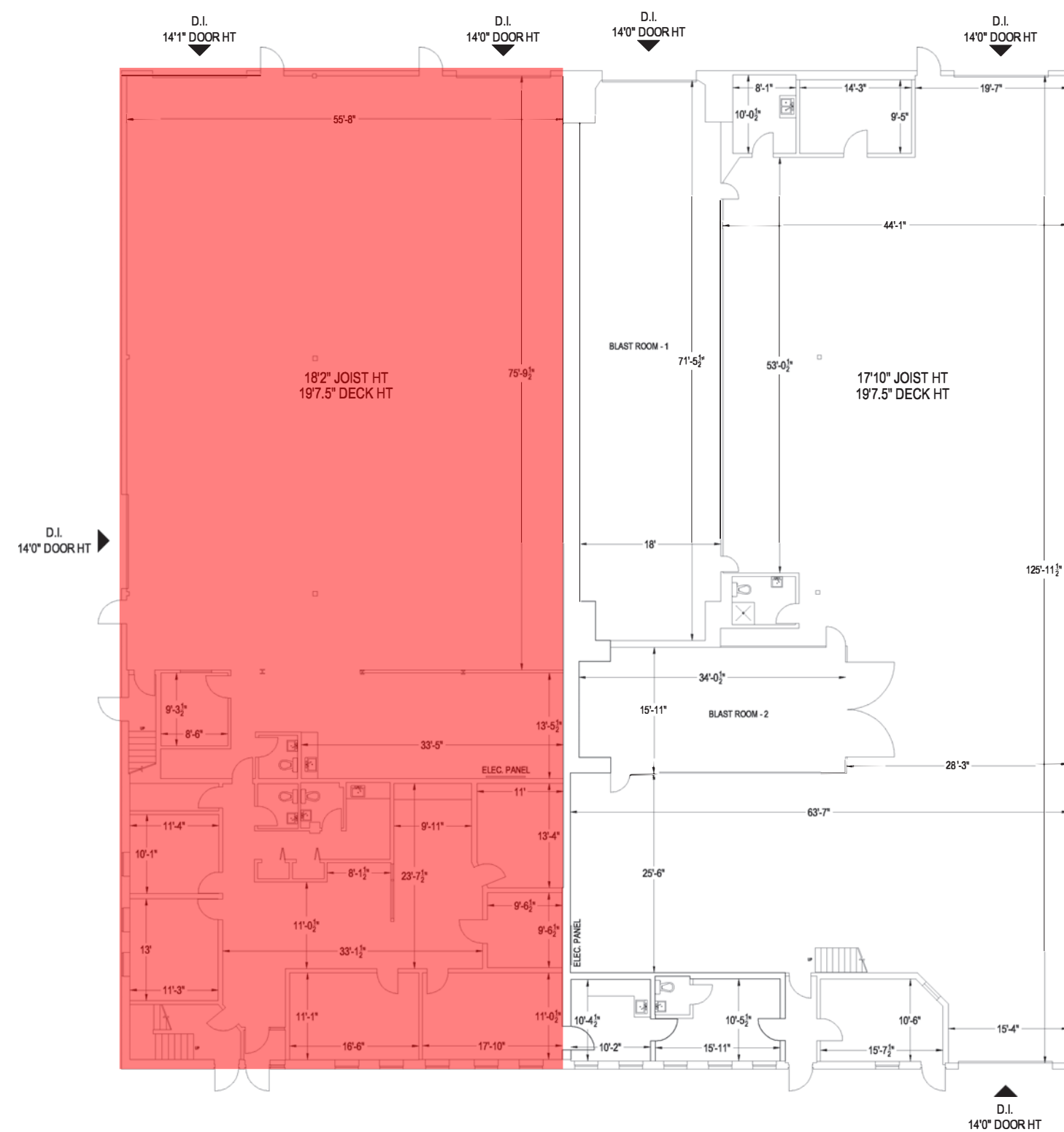
3
Drive-in Doors

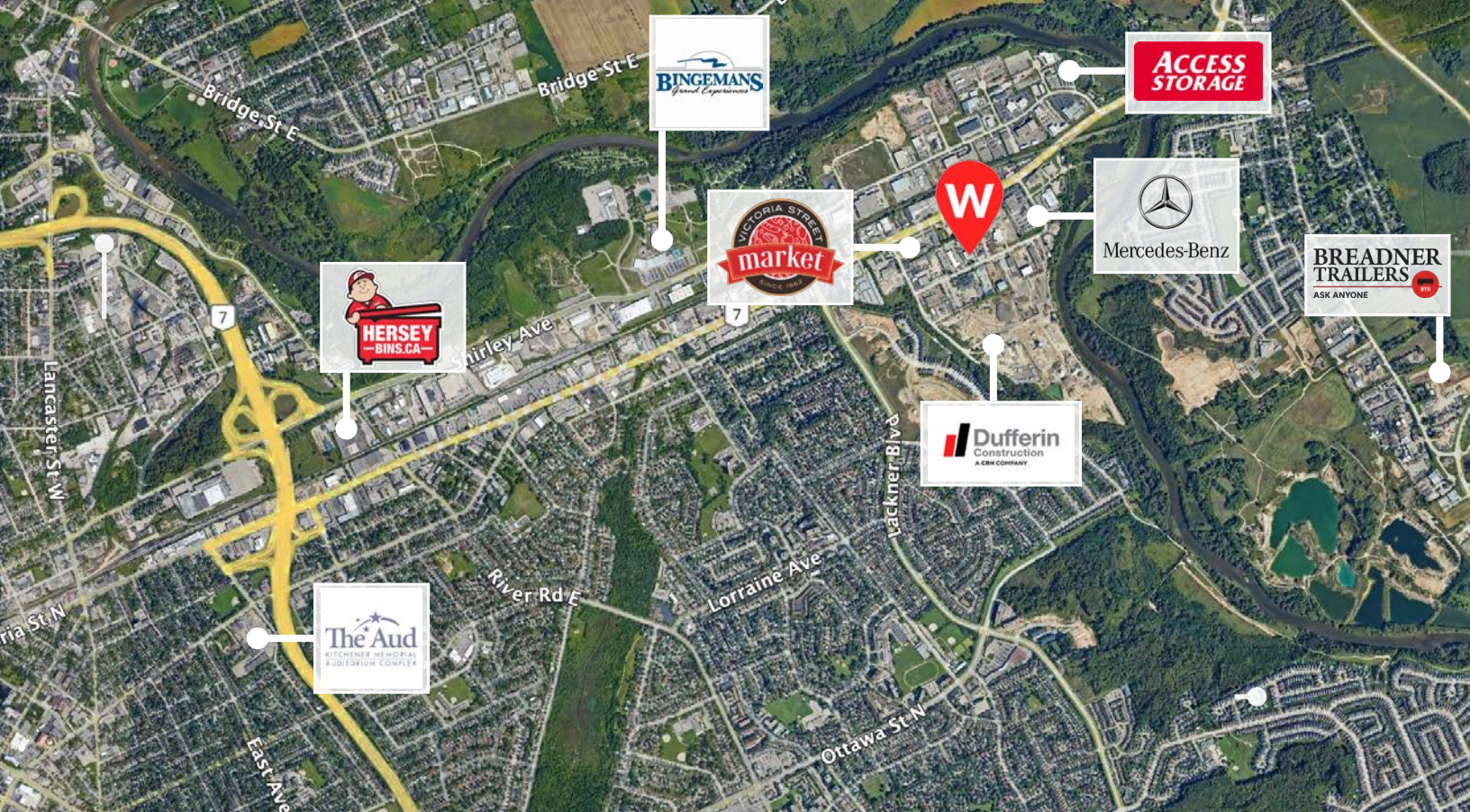




FLOOR PLAN

7,231 SF





HIGHWAY 401 16KM
 CAMBRIDGE 19KM
 MILTON 60KM
 HAMILTON 68KM

MISSISSAUGA 87KM
 LONDON 113KM
 SARNIA BORDER 211KM
 WINDSOR BORDER 290KM

Contact us for more information



Michael Lambert
 Managing Partner, 2x Olympian
 519.590.0286
michael.lambert@whitneyre.com



Jack Hayward
 Sales Representative
 519.270.3314
jack.hayward@whitneyre.com

WHITNEY
 Commercial Real Estate Services

WHITNEY & Company Realty Limited, Brokerage
 103 Bauer Place, Suite 2
 Waterloo, Ontario N2L 6B5
 1.519.746.6300 | www.whitneyre.com

www.whitneyre.com

The information provided herein, including but not limited to images, assumptions, estimates, and descriptions (the "Information"), is obtained from sources considered reliable. However, WHITNEY & Company Realty Limited ("Whitney") and its representatives, agents, or brokers do not warrant, guarantee, or make any representations as to the accuracy, correctness, or completeness of the Information. Whitney disclaims any liability or responsibility for the information or for any reliance the recipient places upon it. Recipients are advised to perform their own due diligence to verify the Information before relying on it. The Information is subject to change, and any property referenced herein may be withdrawn from the market at any time without prior notice. Property outlines are approximate and may not represent actual boundaries. All Rights Reserved. © Whitney & Company Realty Limited, Brokerage - 2025

**Broker *Sales Representative