



FOR SALE

5,467 SF Industrial Building for Sale

65

HOWARD PLACE
KITCHENER, ONTARIO

WHITNEY
Commercial Real Estate Services

5,467 SF Industrial Building for Sale

Freestanding, 5,467 SF industrial building on 0.594 acres. The building has a small office build-out, kitchenette, washroom, dock and drive-in loading.

Electrical services in the building is 225 amp/600 volt and the clear height ranges from 11' to 13'. The loading doors and HVAC units are two to three years old. A clean ESA Phase 1 report was completed in February 2025.

The property will be sold vacant.

ASKING PRICE | \$1,900,000

AVAILABLE SPACE | 5,467 SF

LAND AREA | 0.594 Acres

ZONING | B2

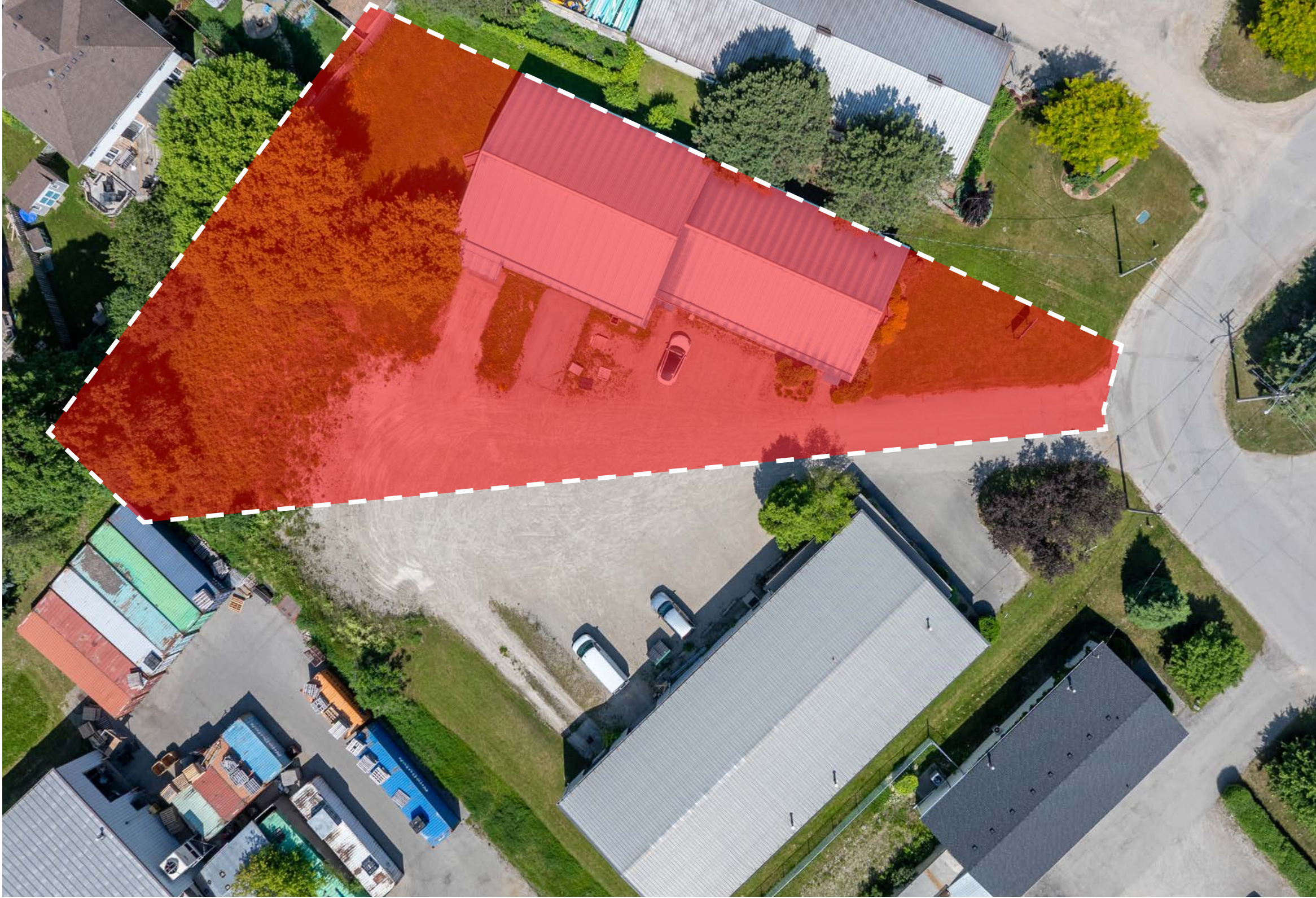
TAXES | \$11,519.36 (2024)

CLEAR HEIGHT | 11' - 13'

POWER | 600 Volts / 225 Amps

DRIVE-IN DOOR | 1 - 12' x 11'

TRUCK LEVEL DOOR | 1 - 8' x 8'



PERMITTED USES (Full list available upon request)

- Building Material and Decorating Supply Sales
- Commercial Parking Facility
- Computer, Electronic or Data Processing Business
- Day Care Facility
- Dwelling Unit
- Industrial Administrative Office
- Laboratory
- Manufacturing
- Printing Establishment
- Repair Service
- Research and Development Establishment
- Sale, Rental or Service of Business Machines and Office Supplies
- Sale, Rental, Storage or Service of Tools and Industrial, Farm or Catering Equipment



11' - 13'
Clear Height



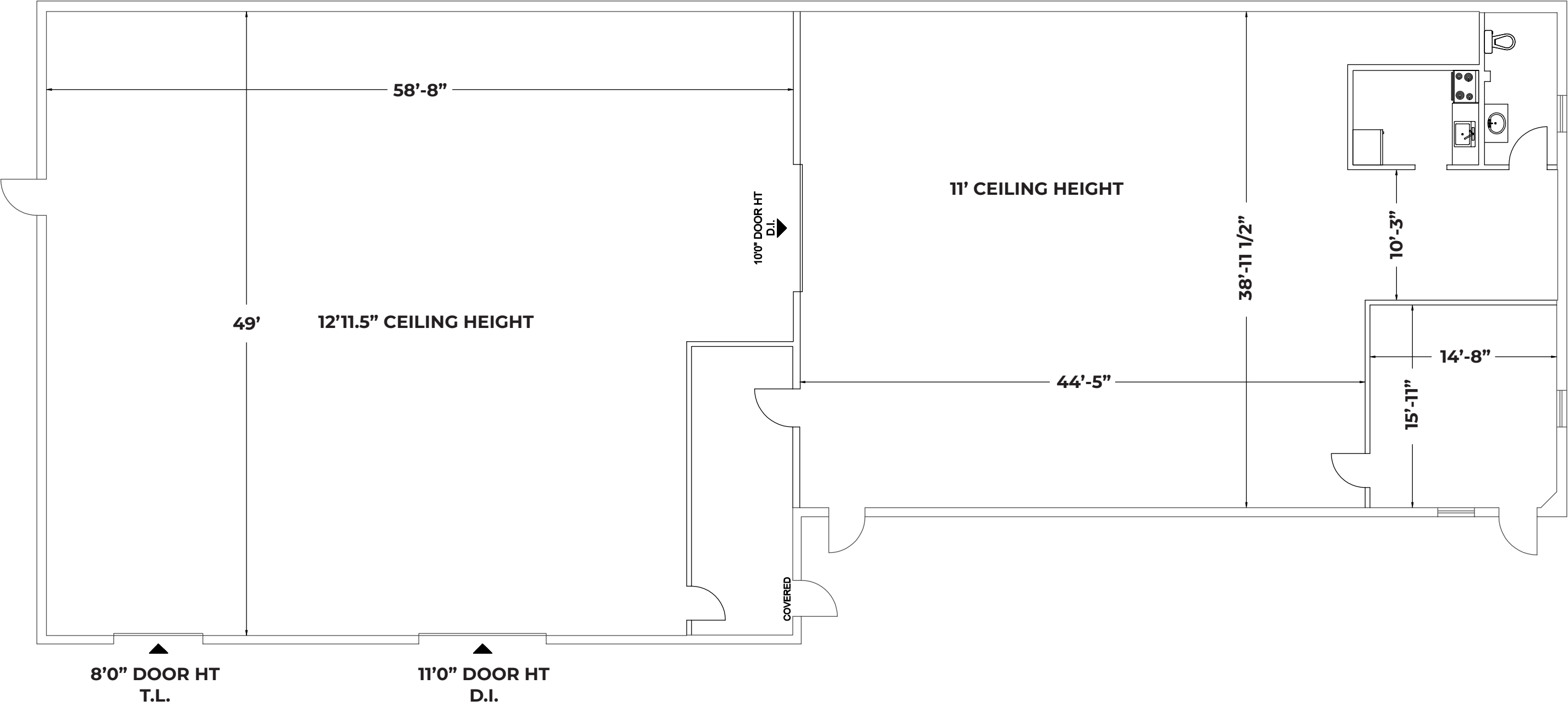
Highway
Access

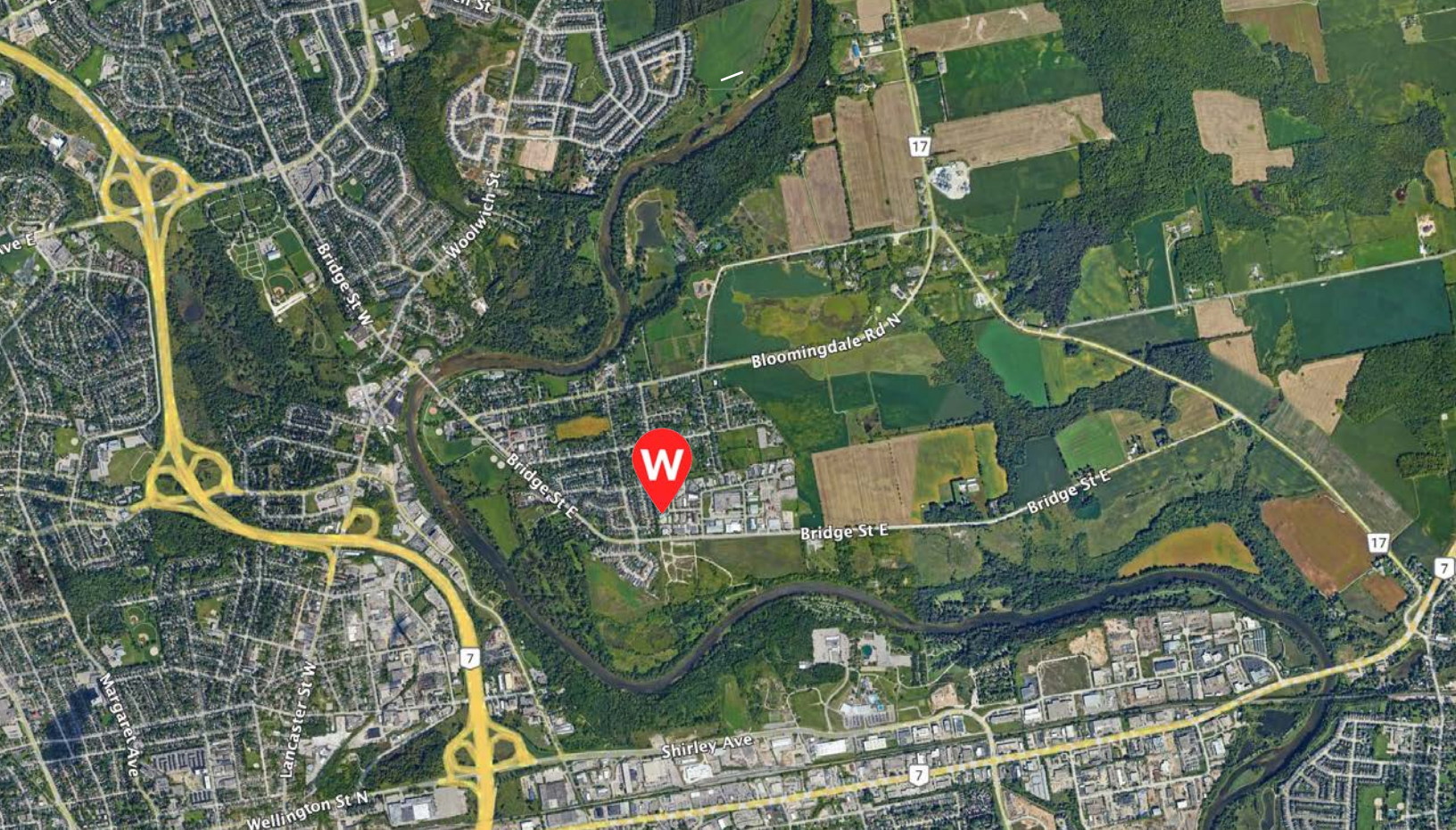


1 Drive-in Door
1 Truck Level Door



FLOOR PLAN
5,467 SF





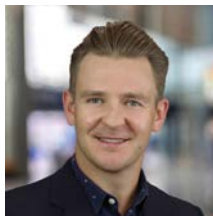
CAMBRIDGE 23KM
 MILTON 62KM
 HAMILTON 71KM
 MISSISSAUGA 90KM

LONDON 115KM
 BUFFALO BORDER 176KM
 SARNIA BORDER 214KM
 WINDSOR BORDER 292KM

Contact Us For More Information



Joe Anstett*, SIOR
 Associate Vice President
 519.721.1659
joe.anstett@whitneyre.com



Rich Evanoff*, SIOR
 Associate Vice President
 226.752.7197
rich.evanoff@whitneyre.com



Xavier Ayora
 Sales Representative
 226.929.4667
xavier.ayora@whitneyre.com

WHITNEY
 Commercial Real Estate Services

WHITNEY & Company Realty Limited, Brokerage
 103 Bauer Place, Suite 2
 Waterloo, Ontario N2L 6B5
 1.519.746.6300

www.whitneyre.com

The information provided herein, including but not limited to images, assumptions, estimates, and descriptions (the "Information"), is obtained from sources considered reliable. However, WHITNEY & Company Realty Limited ("Whitney") and its representatives, agents, or brokers do not warrant, guarantee, or make any representations as to the accuracy, correctness, or completeness of the Information. Whitney disclaims any liability or responsibility for the Information or for any reliance the recipient places upon it. Recipients are advised to perform their own due diligence to verify the Information before relying on it. The Information is subject to change, and any property referenced herein may be withdrawn from the market at any time without prior notice. Property outlines are approximate and may not represent actual boundaries. All Rights Reserved. © Whitney & Company Realty Limited, Brokerage - 2025

****Broker *Sales Representative**