

FOR LEASE



Main Floor Office Space with HWY 85 Exposure

1060

**GUELPH STREET
KITCHENER, ONTARIO**

WHITNEY
Commercial Real Estate Services

Main Floor Office Space with HWY 85 Exposure

Central location with great access to and from the expressway. Fully built-out office space with an open floor plate, kitchenette and two in suite washrooms. Benefit from large windows, ample drive up parking and a professionally managed property.

- Open office layout
- Plenty of natural light
- Private kitchen and washrooms
- Video / monitored security
- Individual HVAC
- Ample on-site parking
- Fronting HWY 85

AVAILABLE AREA | 2,688 SF

LEASE RATE | \$14.50 / SF NET

ADDITIONAL RENT | \$13.62 / SF (heat & hydro incl.)

ZONING | EMP-5

AVAILABLE AREA | 5,032 SF

LEASE RATE | \$15.50 / SF NET

ADDITIONAL RENT | \$13.62 / SF (heat & hydro incl.)

ZONING | EMP-5



PERMITTED USES

- Automotive Detailing and Repair Operation
- Biotechnological Establishment
- Building Material and Decorating Supply Establishment
- Bulk Fuel and Oil Storage Establishment
- Commercial Vehicle Wash Facility
- Craftsperson Shop
- Day Care Facility

- Drive-Through Facility
- Fitness Centre
- Manufacturing
- Printing or Publishing Establishment
- Restaurant
- Restoration, Janitorial, or Security Services
- Warehouse



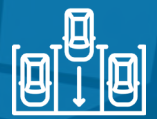
Fully Built-out Office Space



Private Washrooms



HWY 85 Access

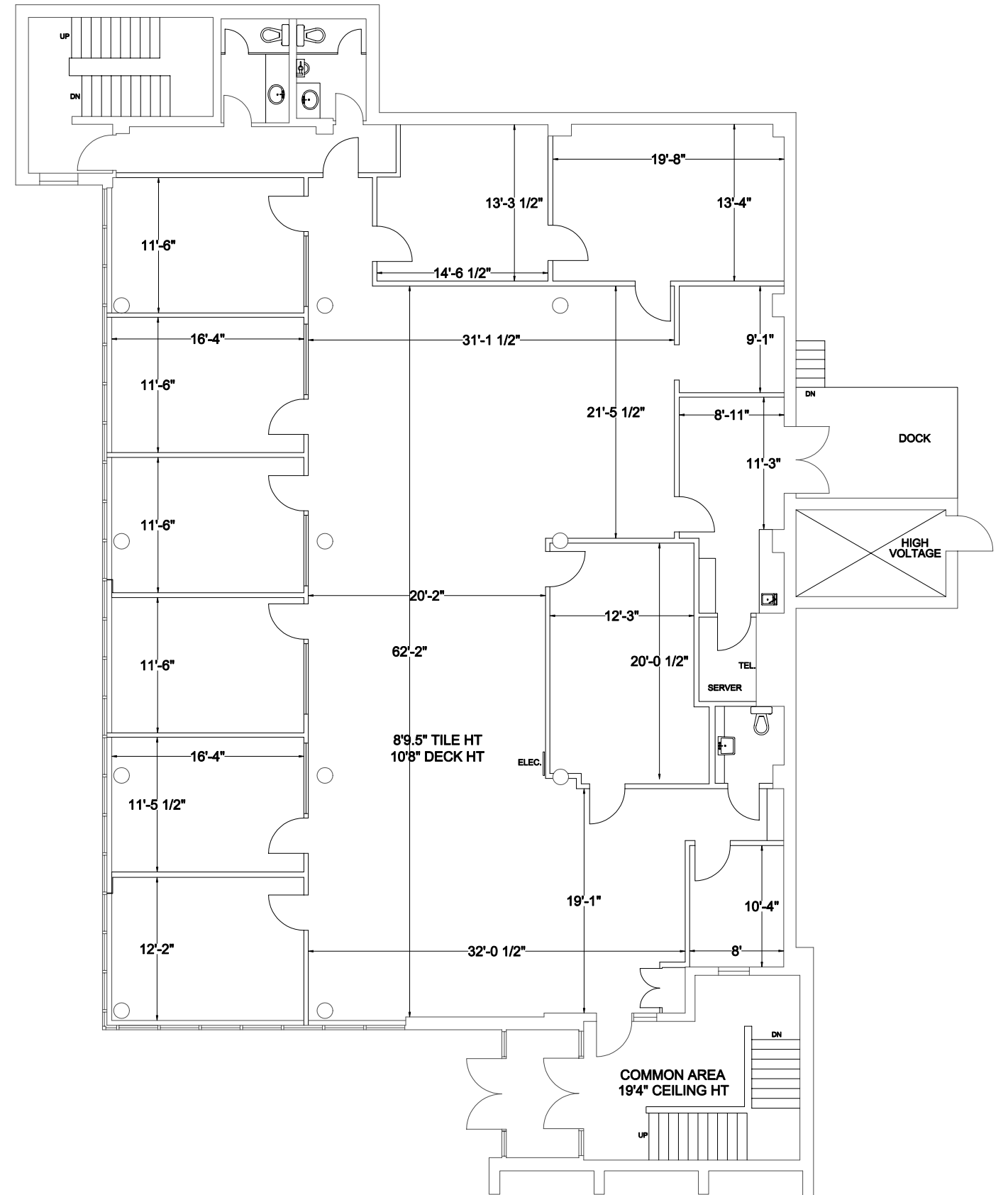


Drive-up Parking



FLOOR PLAN

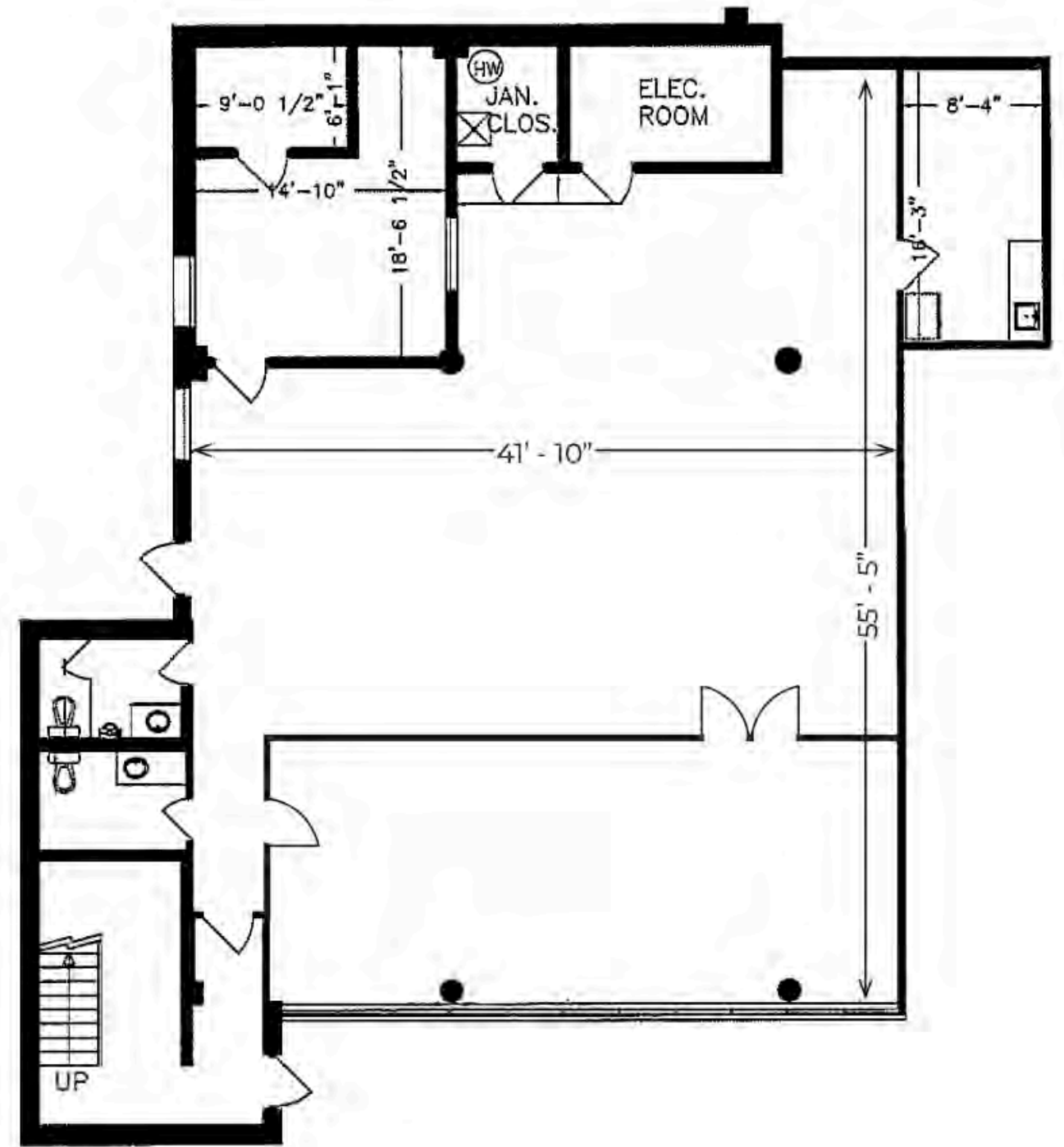
5,032 SF

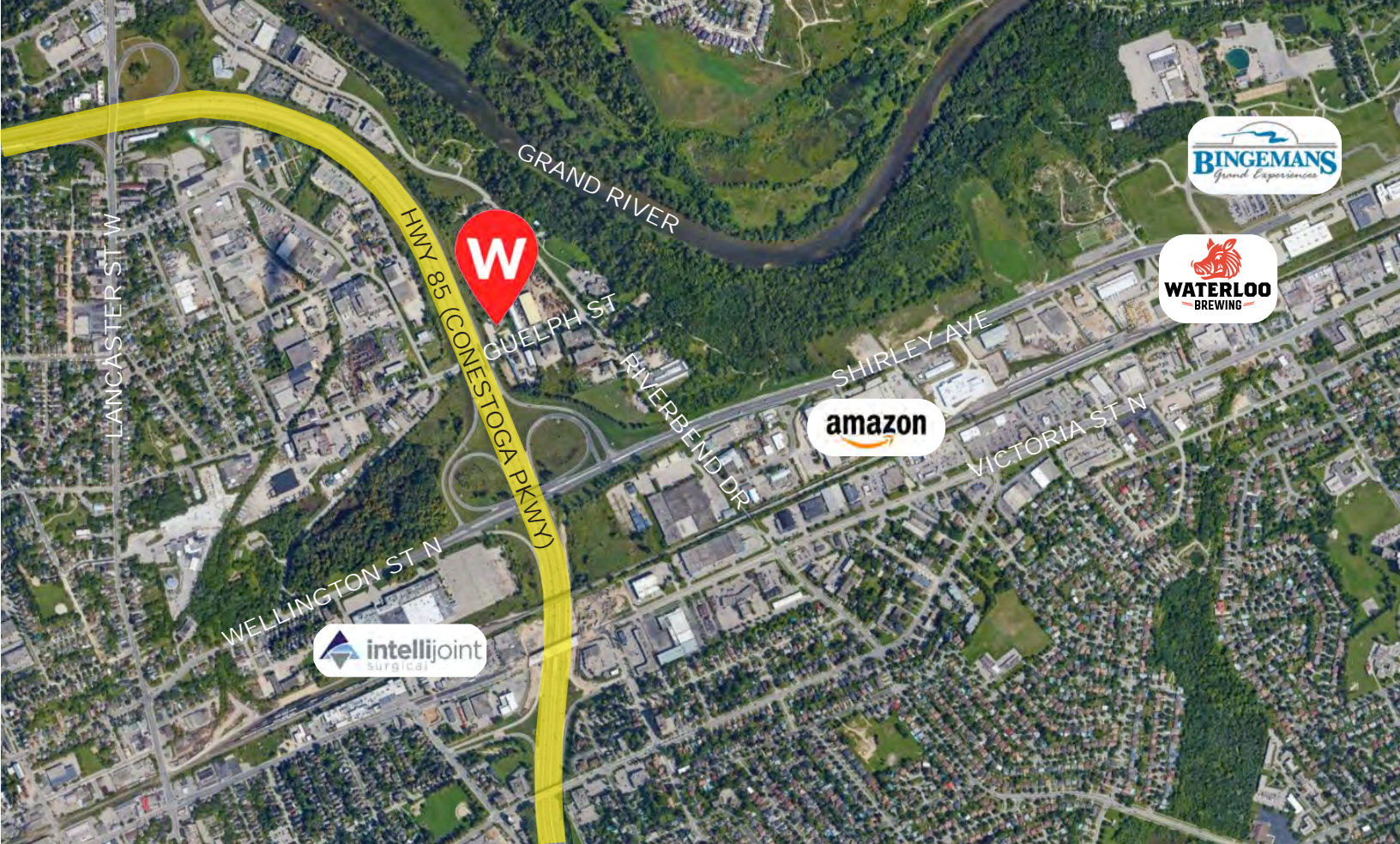




FLOOR PLAN

2,688 SF





Contact listing agents for more information.



Joe Anstett*, SIOR
Associate Vice President
519.721.1659
joe.anstett@whitneyre.com



Matthew Hayward
Senior Sales Representative
519.270.4691
matthew.hayward@whitneyre.com



Jack Hayward
Sales Representative
519.270.3314
jack.hayward@whitneyre.com

WHITNEY
Commercial Real Estate Services

WHITNEY & Company Realty Limited, Brokerage
103 Bauer Place, Suite 2, Waterloo, ON N2L 6B5

519.746.6300 | www.whitneyre.com

The information provided herein, including but not limited to images, assumptions, estimates, and descriptions (the "Information"), is obtained from sources considered reliable. However, WHITNEY & Company Realty Limited ("Whitney") and its representatives, agents, or brokers do not warrant, guarantee, or make any representations as to the accuracy, correctness, or completeness of the Information. Whitney disclaims any liability or responsibility for the information or for any reliance the recipient places upon it. Recipients are advised to perform their own due diligence to verify the Information before relying on it. The Information is subject to change, and any property referenced herein may be withdrawn from the market at any time without prior notice. Property outlines are approximate and may not represent actual boundaries. All Rights Reserved. © Whitney & Company Realty Limited, Brokerage - 2025

**Broker *Sales Representative