

FOR LEASE

PAWN CENTRE
TEL: 585-1300
GOLD . DIAMONDS . ELECTRONICS . MUSICAL . VIDEO . LCD . ETC .

159



157

SUPREME PIZZA & WINGS
2 FOR 1
Free Delivery 578-4888

157

KING STREET E
KITCHENER, ONTARIO | 2ND FLOOR

2nd Level Office Space in Downtown Kitchener

WHITNEY
Commercial Real Estate Services

FOR LEASE

157 KING STREET E | KITCHENER | ONTARIO



SUITE 200

AVAILABLE SPACE | 1,315 SF

LEASE RATE | \$16.00 / SF GROSS

ZONING | D-1

FEATURES

- Reception area
- Open work areas
- 2 private offices
- Large windows
- Gender-neutral washrooms
- 2 dedicated rear parking spots
- Signage opportunities

THE PROPERTY

Second level office space located in the heart of Downtown Kitchener. This office space features large windows, free on-site parking, 2 private offices, reception, open work area, and gender-neutral washrooms. Many nearby amenities and within walking distance to the LRT / bus stops. Opportunity for signage exposure on King St. 2 dedicated parking stalls at no additional cost and the balance of parking is unreserved and in common.



Office Space



Public Transit



Free On-site Parking



Downtown Kitchener

FOR LEASE

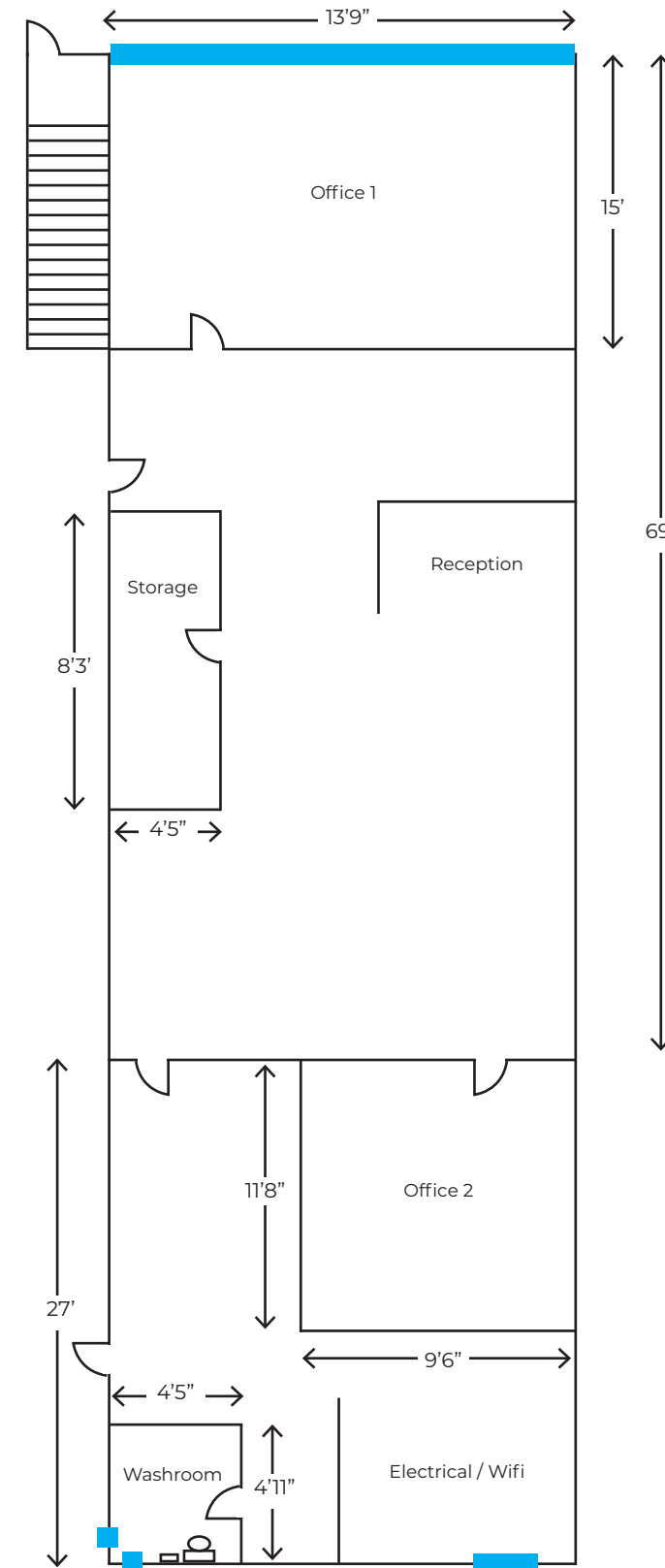
UNIT 200 | KITCHENER | ONTARIO



FLOOR PLAN

UNIT 200 | KITCHENER | ONTARIO

1,315 SF TOTAL



FOR LEASE

157 KING STREET E | KITCHENER | ONTARIO



Please contact listing agents for more information.



Matthew Hayward
Sales Representative
519.270.4691
matthew.hayward@whitneyre.com



Xavier Ayora
Sales Representative
226.929.4667
xavier.ayora@whitneyre.com



WHITNEY & Company Realty Limited, Brokerage | 103 Bauer Place, Suite 2 | Waterloo, Ontario | N2L 6B5
www.whitneyre.com | +1.519.746.6300

Although the information contained within is from sources believed to be reliable, no warranty or representation is made as to its accuracy being subject to errors, omissions, conditions, or other changes without notice and should not be relied upon without independent verification. These statements are not guarantees of future performance and undue reliance should not be placed on them. WHITNEY & Company Realty Limited, Brokerage © 04/2024