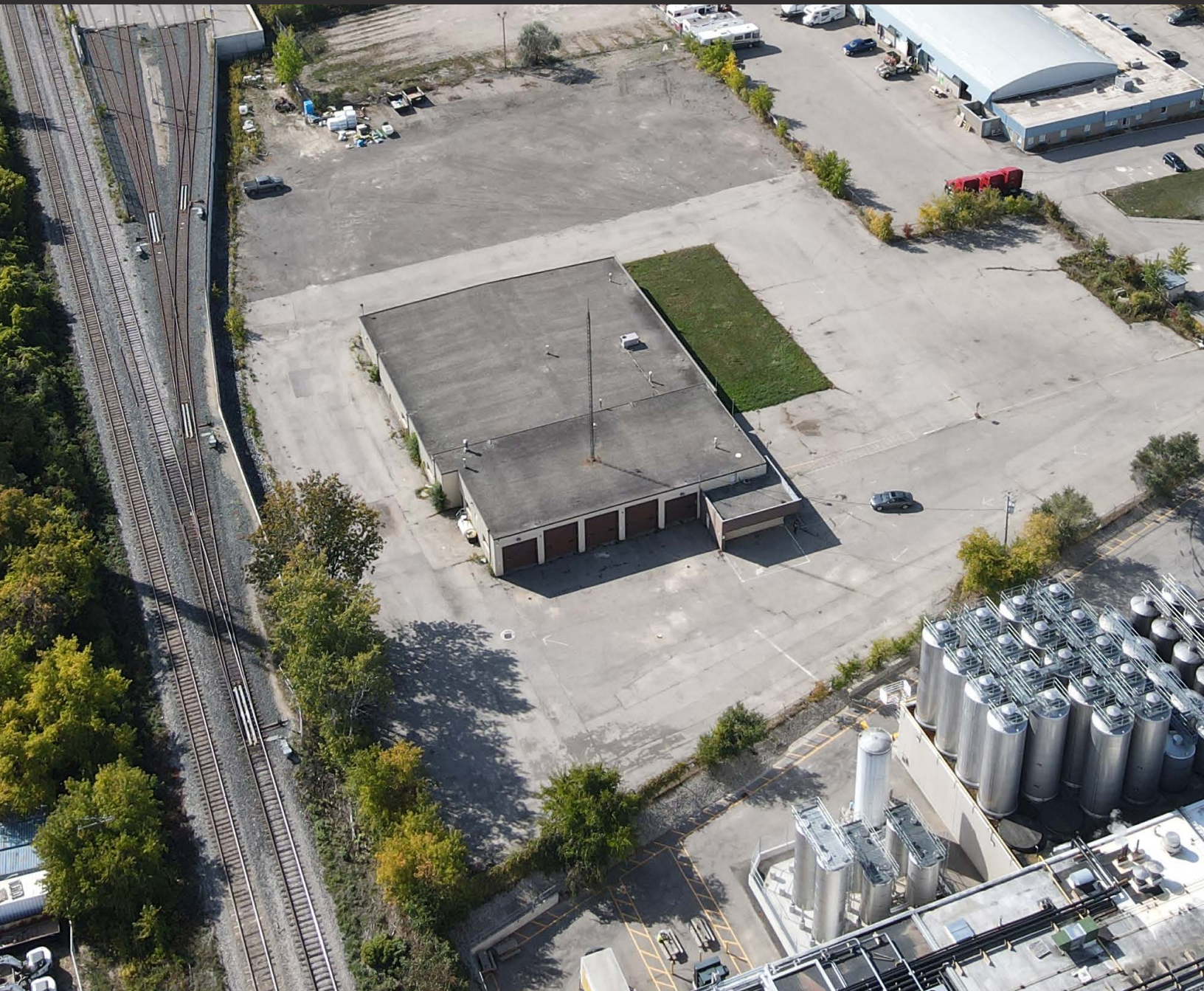




360 SHIRLEY AVE

16,201 SF INDUSTRIAL PROPERTY ON 4.202 ACRES

360 SHIRLEY AVE, KITCHENER | ONTARIO



Industrial Property with Expansion Opportunity

16,201 SF truck repair facility situated on 4.202 Acres with room for expansion. Centrally located in Kitchener with easy access to both Northbound and Southbound transfers onto HWY 85 at Wellington St N.

Heavy industrial zoning (EMP-3) permits a wide variety of uses including heavy repair operation, truck transport terminal, manufacturing, warehousing and outdoor storage. Located 1.5 KM to HWY 85, 5 KM to HWY 8, 12 KM to HWY 401 and 9 KM to the Region of Waterloo International Airport.

TOTAL BUILDING AREA | 16,201 SF

TOTAL LAND AREA | 4.202 Acres

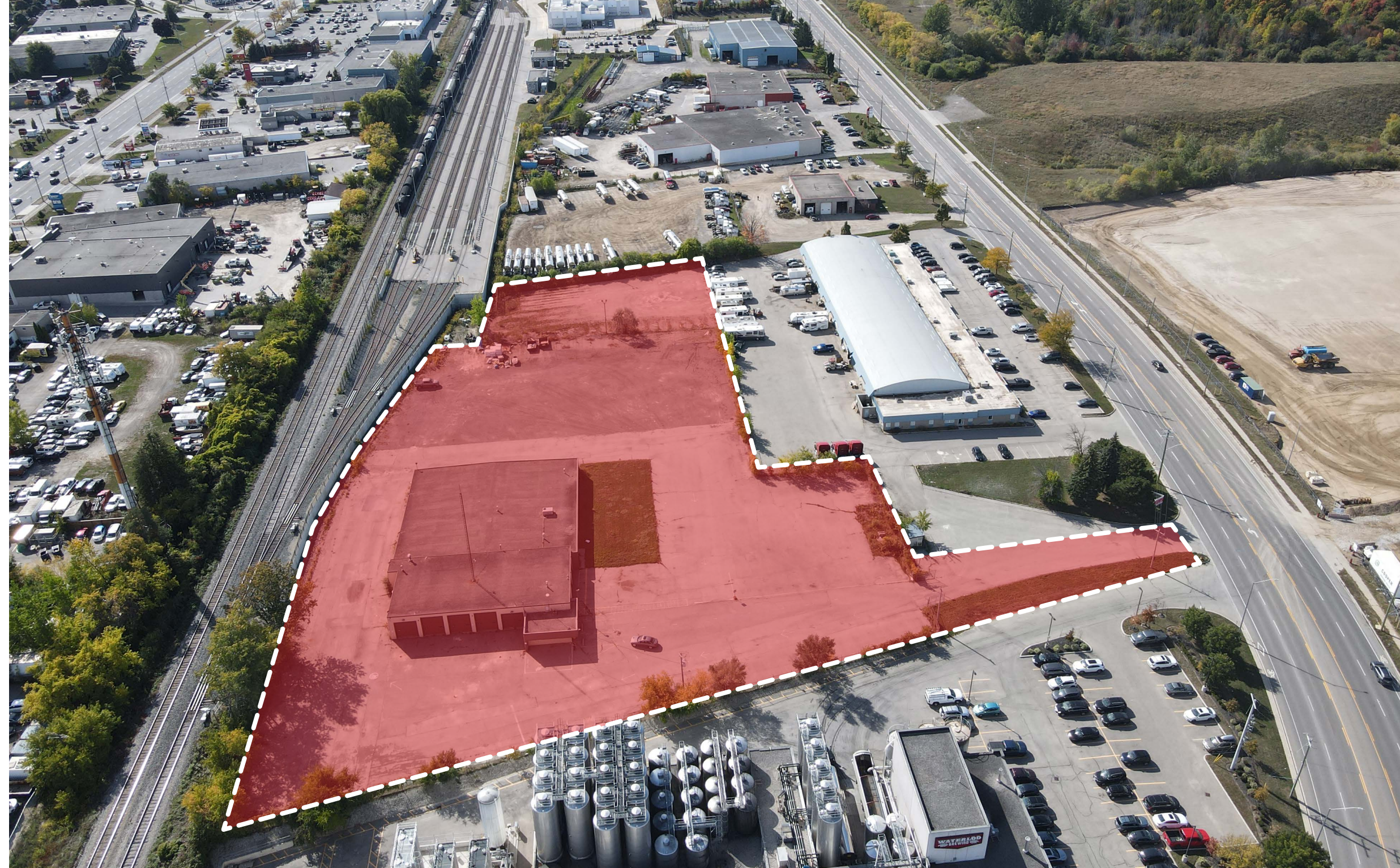
ASKING PRICE | \$5,490,000

TOTAL TAXES | \$33,261.04 (2022)

ZONING | EMP-3

LOADING | 12 drive-in doors

CLEAR HEIGHT | 12'2" - 13'6"



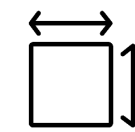
Permitted Uses

- Heavy Repair Operation
- Indoor Recycling Operation
- Outdoor Recycling Operation
- Major Equipment Supply and Service
- Manufacturing
- Propane Facility

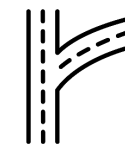
- Salvage or Scrap Yard
- Tradesperson or Contractor's Establishment
- Truck Transport Terminal
- Warehouse



Rare EMP-3 heavy industrial zoning



4.202 Acres of land



1.5 KM to HWY 85, 12 KM to HWY 401



Large lot with outdoor storage



360 SHIRLEY AVE

85

1.5 KM TO HWY 85 INTERCHANGE

12 KM TO HWY 401



DISTANCE FROM 360 SHIRLEY AVENUE			
HWY 401 - 12 KM	Guelph - 14 KM	Hamilton - 62 KM	London - 100 KM
HWY 8 - 5 KM	Milton - 53 KM	Brantford - 48 KM	Waterloo Airport - 9 KM

Contact Listing Agents for more information.



Michael Lambert, SIOR
Sales Representative, President
2X Olympian, 519.590.0286
michael.lambert@whitneyre.com



John Whitney, SIOR
Broker of Record, CEO
519.746.6300
john.whitney@whitneyre.com



Joe Anstett
Sales Representative
519.721.1659
joe.anstett@whitneyre.com



Richie Evanoff
Sales Representative
226.752.7197
richie.evanoff@whitneyre.com



WHITNEY & Company Realty Limited, Brokerage | 103 Bauer Place, Suite 2 | Waterloo, Ontario | N2L 6B5
www.whitneyre.com | 519.746.6300

Although the information contained within is from sources believed to be reliable, no warranty or representation is made as to its accuracy being subject to errors, omissions, conditions, or other changes without notice and should not be relied upon without independent verification. These statements are not guarantees of future performance and undue reliance should not be placed on them. WHITNEY & Company Realty Limited, Brokerage © 08/2023