

**SHORT-TERM / LONG TERM
LEASE OPTIONS**

**DEMO NOW
COMPLETE**

54,497 SF of Warehouse / Manufacturing Space with Loading

50

**NORTHLAND ROAD - UNIT 100
WATERLOO, ONTARIO**

WHITNEY
Commercial Real Estate Services

- ▶ Attractive lease rates and incentives
- ▶ Short-term or long-term lease options

TOTAL LEASEABLE AREA | 54,497 SF

FLEX / INDUSTRIAL AREA | 47,559 SF

OFFICE AREA | 6,918 SF

LEASE RATE | \$9.95 / SF Net

ADDITIONAL RENT | \$4.82 / SF

ZONING | E3-27

SHORT-TERM LEASE RATE

\$1.10 / SF Gross / Month

Utilities included

PERMITTED USES (Complete list available upon request)

- Advanced tech
- Automobile service centre
- Business incubator
- Data centre
- Food and beverage manufacturing industry
- Industrial assembly, manufacturing and processing
- Laboratory
- Manufacturing
- Office
- Pharmaceutical industry
- Printing establishment
- Tech office
- Truck depot
- Warehouse (no retail)
- Wholesaler (no retail)



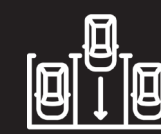
Ideal for logistics and storage companies, or any business looking for long-term or short-term storage space. Temperature controlled manufacturing / warehouse unit with 1,200 amp service. Demo has been completed to restore the premises to traditional manufacturing / warehouse space and add additional dock level loading. Ceiling heights are 17'8" clear and the unit has extensive power distribution.



Drive-in / Dock Level Doors



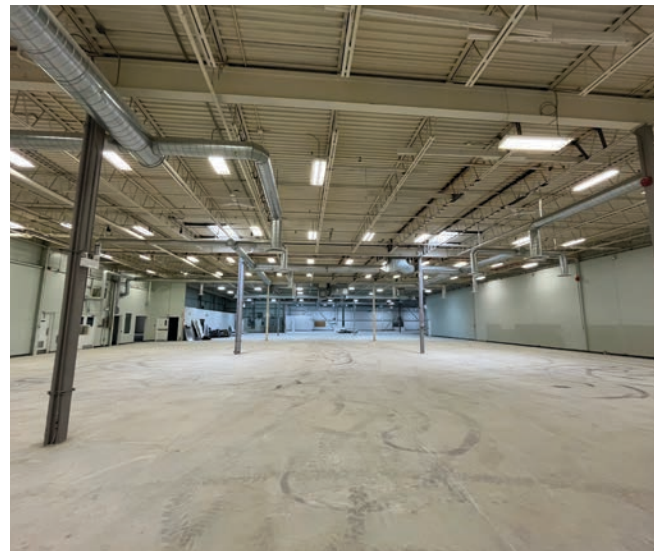
Temperature Controlled



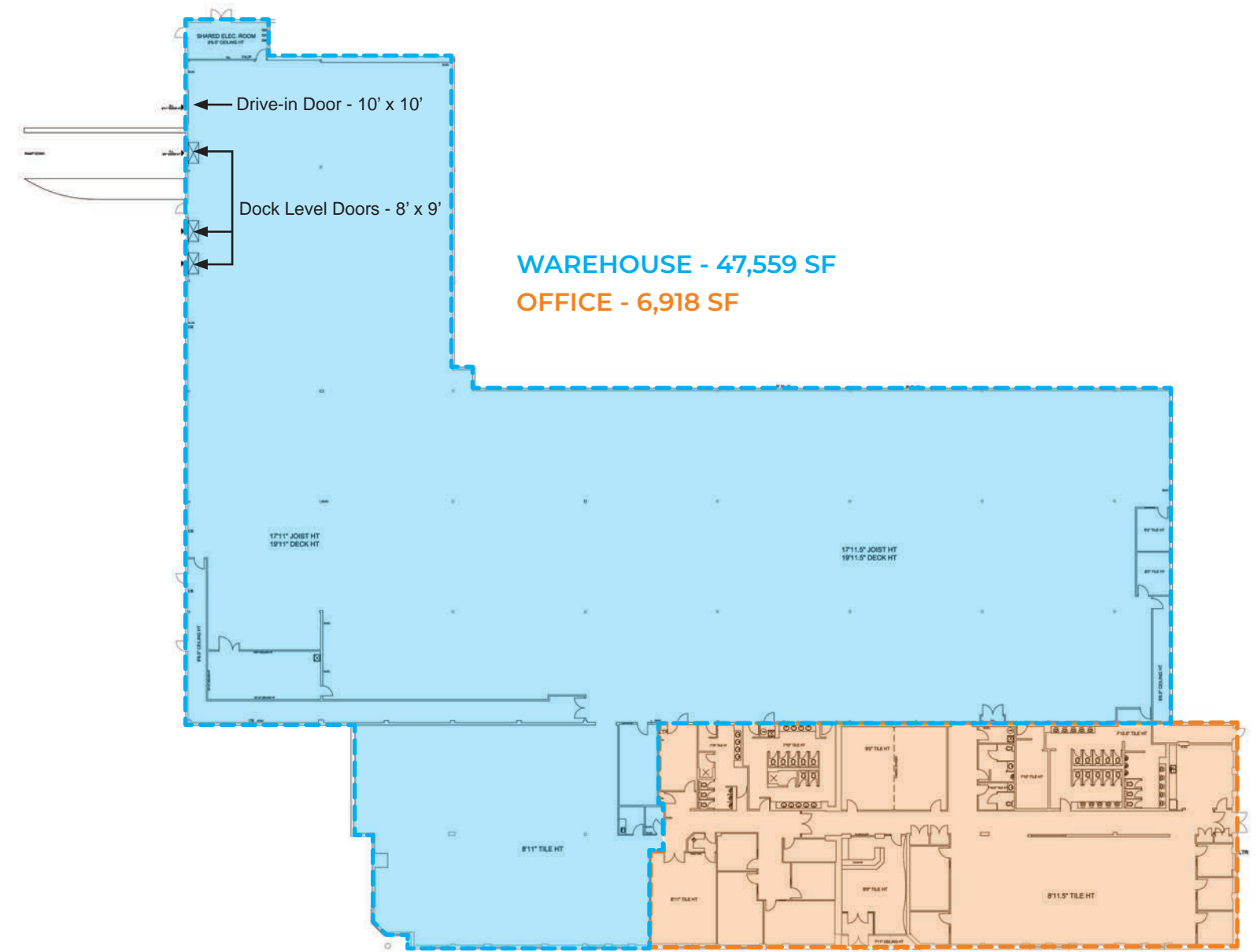
Ample Parking



LRT Nearby



FLOOR PLAN



PROPERTY SPECS

- 54,497 SF
- 1 - 10' x 10' drive-in door
- 3 - 8' x 9' dock level doors
- 17'8" clear height
- 600 volts / 1,200 amps
- Temperature controlled
- Boardrooms
- Kitchen and lunchroom
- Quick access to Hwy 85
- Ample on-site parking



Contact Listing Agents for more information



Michael Lambert, SIOR
Sales Representative, President
519.590.0286
michael.lambert@whitneyre.com



Joe Anstett, SIOR
Sales Representative
519.721.1659
joe.anstett@whitneyre.com



Richie Evanoff
Sales Representative
226.752.7197
richie.evanoff@whitneyre.com



Matthew Hayward
Sales Representative
519.270.4691
matthew.hayward@whitneyre.com

WHITNEY
Commercial Real Estate Services

WHITNEY & Company Realty Limited, Brokerage
103 Bauer Place, Suite 2
Waterloo, Ontario N2L 6B5
1.519.746.6300 | www.whitneyre.com

www.whitneyre.com